

?abstraction

laurie fendrich

luke gray

tad wiley

may 29 — july 25, 2008

opening: wednesday, may 28, 6 to 8 pm

GARY SNYDER ProjectSpace

250 WEST 26 STREET NEW YORK NY 10001

T: 212 929 1351 WWW.GARYSNYDERART.COM

PRESS RELEASE

?abstraction : laurie fendrich, luke gray, tad wiley opens to the public May 29th at the new Gary Snyder/Project Space in Chelsea. The exhibition focuses on three contemporary painters who question and embrace abstraction in diverse ways.

This will be the first exhibition of contemporary art at Gary Snyder/Project Space. Previous exhibitions have focused on historically rooted abstract art ("Thomas Downing: Washington Color School Painter" and "Tadaaki Kuwayama: Paintings from the 1970s").

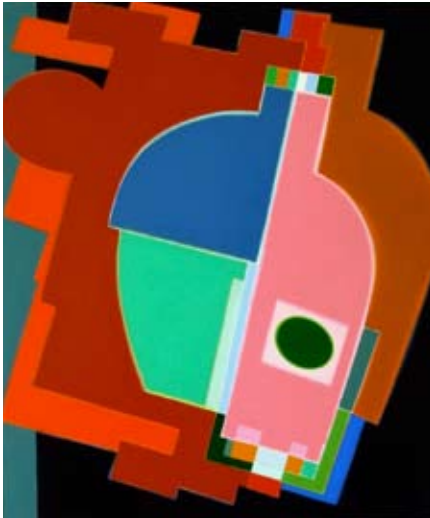
Laurie Fendrich lives in New York, and has shown extensively since the early 1980s. Her most recent exhibition was at Katharina Rich Perlow Gallery, NY. Her work has also appeared in such group exhibitions as *Slow Art*, curated by Alanna Heiss at P.S. 1 and The Design Academy of New York's Biennial Exhibition. Fendrich is a Professor of Fine Arts at Hofstra University and her essays on art and painting appear regularly in *The Chronicle of Higher Education*. Her comments on cultural issues appear several times a week on *The Chronicle's* blog-site, "Brainstorm." In 2010, her paintings and drawings will be the subject of a retrospective at the Williamson Art Gallery, Scripps College, in Claremont, CA.

Luke Gray lives in Brooklyn, and has been exhibiting in the New York area since the late 1980s. Early exposure included White Columns, Nicole Klagsbrun Gallery, and The Premio Internazionale Fiar, curated by Dan Cameron. He has had numerous solo shows, including Thomas Erben Gallery (1996), Galerie Ludwig (1996, Krefeld, Germany), and Snyder Fine Art in 1996, 1998 and 2002. Major commissioned works include "TransMission 1998," a ceiling mural in Times Square at 1500 Broadway, and "Universal Health," a monumental wall painting for The Robert Wood Johnson Foundation in Princeton, New Jersey.

Tad Wiley has exhibited his artworks throughout the United States since moving to New York City in 1979. Early exposure includes important "alternative" venues in New York such as The Drawing Center, Artists Space, The Sculpture Center, and the Institute for Art and Urban Resources at P.S. 1. More recently Wiley has exhibited at: Lora Schlesinger Gallery, Los Angeles, HWY 90 Gallery, Marfa, Texas, The Montclair Art Museum, The Orlando Museum of Art, and Ace Gallery, Arena, and Rare, all in New York City.

Gary Snyder/Project Space is located at 250 West 26th Street, 4th floor. Summer hours for this exhibition are Monday to Friday 11–6pm.

For further information please contact info@garysnyderart.com, call 212 929 1351, or go to our web-site www.garysnyderart.com.



Laurie Fendrich



Luke Gray



Tad Wiley